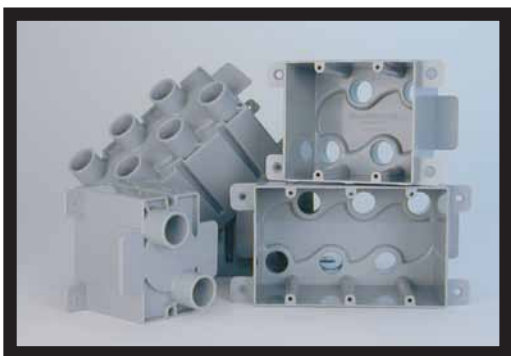


HOW TO INSTALL PLASTILOCK ELECTRICAL BOXES

The ONLY electrical boxes UL tested and listed for use in ICF systems.



STEP 1

Lay out the first course of ICF block & mark interior wall intersections. Mark for outlets every 8' or according to local code. Also plan placements for light switch, speaker, TV/home theatre, phone, data, security, and any other interior or exterior electrical needs.



STEP 2

Cut openings in the top edge of the ICF blocks to fit the Plastilock box being installed. Cut outlet boxes into the first course and switch boxes into the third course. (HINT: Save foam cut-out and insert back inside box for protection until wiring is ready to be pulled.)



STEP 3

Install the Plastilock boxes into the cut out opening. Boxes should fit securely enough to prevent concrete leakage, but not so tight as to deform the sides of the electrical boxes.



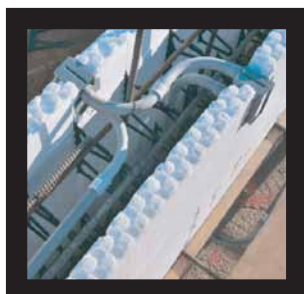
STEP 4

Insert the cut-out foam block back inside the Plastilock box. This protects the box from any distortion or spilled concrete during the pour.



STEP 5

Glue standard PVC sweeps and conduit onto the boxes to complete the wiring raceways. Finish running each course of ICF block, placing additional boxes and conduit as needed. Tie conduit to rebar within 12" of the Plastilock box to prevent shifting during pour.



STEP 6

Using the Plastilock boxes and conduit make it easy to connect interior and exterior wiring paths for outlet, lighting, security, speakers, etc. No more drilling through finished concrete and rebar!



STEP 7

Indicate the conduit directions on the foam, to illustrate for the electrician where the conduit paths go once the walls and floors have been poured.



STEP 8

Complete the concrete pour. Wiring can now be pulled through the conduit in the ICF walls by any electrician. No more messy and time consuming cutting of wiring channels into the finished foam walls! The wiring circuits can now be upgraded at any time!

"Yeah, but how long does this all take?"

"On average, it takes me less than five minutes per box to do everything. That includes all of the steps shown here. When the electrician arrives, all he has to do is pull wire through the conduit paths."

"Now, compare that to the time it would take to 'cut in' all the wiring channels and box openings with a saw or hotknife, drill & screw the boxes to the concrete, and secure all the wiring with clamps so it meets code. That takes a heck of a lot longer! Plus, electricians hate installing wiring this old way!"

"At my rate of \$20 per box set, you can see why I like putting these Plastilock boxes in, almost as much as my customers like the benefits of having them! - Dave VanMatre - Builder"